

## HIGHLIGHTS OF PRESCRIBING INFORMATION

These highlights do not include all the information needed to use VESICARE safely and effectively. See full prescribing information for VESICARE.

VESICARE® (solifenacin succinate) tablets, for oral use  
Initial U.S. Approval: 2004

### INDICATIONS AND USAGE

VESICare is a muscarinic antagonist indicated for the treatment of adults with overactive bladder with symptoms of urge urinary incontinence, urgency, and urinary frequency. (1)

### DOSAGE AND ADMINISTRATION

- 5 mg tablet taken orally once daily, and if well tolerated may be increased to 10 mg once daily. (2.1)
- Do not exceed the 5 mg dose of VESICare in patients with:
  - Severe renal impairment creatinine clearance < 30 mL/min/1.73 m<sup>2</sup>. (2.2, 8.6)
  - Moderate hepatic impairment (Child-Pugh B). VESICare is not recommended in patients with severe hepatic impairment (Child-Pugh C). (2.3, 8.7)
  - Concomitant use of strong CYP3A4 inhibitors. (2.4, 7.1)

### DOSAGE FORMS AND STRENGTHS

Tablets: 5 mg and 10 mg. (3)

### CONTRAINDICATIONS

- Urinary retention. (4, 5.2)
- Gastric retention. (4, 5.3)
- Uncontrolled narrow-angle glaucoma. (4, 5.5)
- Hypersensitivity to this product or any of its components. (4, 5.1, 6.2)

### WARNINGS AND PRECAUTIONS

- Angioedema and Anaphylactic Reactions:** Promptly discontinue VESICare and provide appropriate therapy. (5.1)
- Urinary Retention:** VESICare is not recommended for use in patients with clinically significant bladder outlet obstruction. (5.2)
- Gastrointestinal Disorders:** VESICare is not recommended for use in patients with decreased gastrointestinal motility. (5.3)
- Central Nervous System Effects:** Somnolence has been reported with VESICare. Advise patients not to drive or operate heavy machinery until they know how VESICare affects them. (5.4)
- Controlled Narrow-Angle Glaucoma:** Use VESICare with caution in patients being treated for narrow-angle glaucoma. (5.5)
- QT Prolongation in Patients at High Risk of QT Prolongation:** VESICare is not recommended for use in patients at high risk of QT prolongation, including patients with a known history of QT prolongation and patients taking medications known to prolong the QT interval. (5.6)

### ADVERSE REACTIONS

The most common adverse reactions (> 4% in VESICare-treated patients and > placebo-treated patients) were dry mouth and constipation at both 5 mg and 10 mg doses; and urinary tract infection and blurred vision at the 10 mg dose. (6.1)

To report SUSPECTED ADVERSE REACTIONS, contact Astellas Pharma US, Inc. at 1-800-727-7003 or FDA at 1-800-FDA-1088 or [www.fda.gov/medwatch](http://www.fda.gov/medwatch).

### DRUG INTERACTIONS

**CYP3A4 Inhibitors:** Do not exceed the 5 mg dose of VESICare with concomitant use of strong CYP3A4 inhibitors. (7.1)

See 17 for PATIENT COUNSELING INFORMATION and FDA-approved patient labeling

Revised: 10/2022

## FULL PRESCRIBING INFORMATION: CONTENTS\*

### 1 INDICATIONS AND USAGE

### 2 DOSAGE AND ADMINISTRATION

- 2.1 Dosing Information
- 2.2 Dosing Recommendations in Patients with Renal Impairment
- 2.3 Dosing Recommendations in Patients with Hepatic Impairment
- 2.4 Dosing Recommendations in Patients Taking CYP3A4 Inhibitors

### 3 DOSAGE FORMS AND STRENGTHS

### 4 CONTRAINDICATIONS

### 5 WARNINGS AND PRECAUTIONS

- 5.1 Angioedema and Anaphylactic Reactions
- 5.2 Urinary Retention
- 5.3 Gastrointestinal Disorders
- 5.4 Central Nervous System Effects
- 5.5 Controlled Narrow-Angle Glaucoma
- 5.6 QT Prolongation in Patients at High Risk of QT Prolongation

### 6 ADVERSE REACTIONS

- 6.1 Clinical Trials Experience
- 6.2 Postmarketing Experience

### 7 DRUG INTERACTIONS

- 7.1 Strong CYP3A4 Inhibitors

### 8 USE IN SPECIFIC POPULATIONS

- 8.1 Pregnancy
- 8.2 Lactation
- 8.4 Pediatric Use
- 8.5 Geriatric Use
- 8.6 Renal Impairment
- 8.7 Hepatic Impairment
- 8.8 Gender

### 10 OVERDOSAGE

### 11 DESCRIPTION

### 12 CLINICAL PHARMACOLOGY

- 12.1 Mechanism of Action
- 12.2 Pharmacodynamics
- 12.3 Pharmacokinetics

### 13 NONCLINICAL TOXICOLOGY

- 13.1 Carcinogenesis, Mutagenesis, Impairment of Fertility
- 13.2 Animal Toxicology and/or Pharmacology

### 14 CLINICAL STUDIES

### 16 HOW SUPPLIED/STORAGE AND HANDLING

### 17 PATIENT COUNSELING INFORMATION

\*Sections or subsections omitted from the full prescribing information are not listed.

## FULL PRESCRIBING INFORMATION

### 1 INDICATIONS AND USAGE

VESICare® is indicated for the treatment of adults with overactive bladder with symptoms of urge urinary incontinence, urgency, and urinary frequency.

## 2 DOSAGE AND ADMINISTRATION

### 2.1 Dosing Information

The recommended oral dose of VESIcare is 5 mg once daily. If the 5 mg dose is well tolerated, the dose may be increased to 10 mg once daily.

VESIcare should be taken with water and swallowed whole. VESIcare can be administered with or without food.

### 2.2 Dosing Recommendations in Patients with Renal Impairment

Do not exceed 5 mg once daily in patients with severe renal impairment ( $CL_{cr} < 30$  mL/min/1.73 m<sup>2</sup>) [see [Use in Specific Populations](#) (8.6)].

### 2.3 Dosing Recommendations in Patients with Hepatic Impairment

Do not exceed 5 mg once daily in patients with moderate hepatic impairment (Child-Pugh B). Do not use VESIcare in patients with severe hepatic impairment (Child-Pugh C) [see [Use in Specific Populations](#) (8.7)].

### 2.4 Dosing Recommendations in Patients Taking CYP3A4 Inhibitors

Do not exceed 5 mg once daily when VESIcare is administered with strong CYP3A4 inhibitors such as ketoconazole [see [Drug Interactions](#) (7.1)].

## 3 DOSAGE FORMS AND STRENGTHS

Tablets:

- 5 mg: round, light yellow, debossed with 150
- 10 mg: round, light pink, debossed with 151

## 4 CONTRAINDICATIONS

VESIcare is contraindicated in patients:

- With urinary retention [see [Warnings and Precautions](#) (5.2)],
- With gastric retention [see [Warnings and Precautions](#) (5.3)],
- With uncontrolled narrow-angle glaucoma [see [Warnings and Precautions](#) (5.5)], and
- Who have demonstrated hypersensitivity to solifenacin succinate or the inactive ingredients in VESIcare. Reported adverse reactions have included anaphylaxis and angioedema [see [Adverse Reactions](#) (6.2)].

## 5 WARNINGS AND PRECAUTIONS

### 5.1 Angioedema and Anaphylactic Reactions

Angioedema of the face, lips, tongue, and/or larynx have been reported with solifenacin succinate. In some cases, angioedema occurred after the first dose, however, cases have been reported to occur hours after the first dose or after multiple doses. Anaphylactic reactions have also been reported in patients treated with solifenacin succinate. Angioedema associated with upper airway swelling and anaphylactic reactions may be life-threatening.

VESIcare is contraindicated in patients with a known or suspected hypersensitivity to solifenacin succinate [see [Contraindications](#) (4)]. If involvement of the tongue, hypopharynx, or larynx occurs, promptly discontinue VESIcare and provide appropriate therapy and/or measures necessary to ensure a patent airway.

## 5.2 Urinary Retention

The use of VESIcare, like other antimuscarinic drugs, in patients with clinically significant bladder outlet obstruction including patients with urinary retention, may result in further urinary retention and kidney injury. The use of VESIcare is not recommended in patients with clinically significant bladder outlet obstruction and is contraindicated in patients with urinary retention [see [Contraindications \(4\)](#)].

## 5.3 Gastrointestinal Disorders

The use of VESIcare, like other antimuscarinic drugs, in patients with conditions associated with decreased gastrointestinal motility may result in further decreased gastrointestinal motility. VESIcare is contraindicated in patients with gastric retention [see [Contraindications \(4\)](#)]. The use of VESIcare is not recommended in patients with conditions associated with decreased gastrointestinal motility.

## 5.4 Central Nervous System Effects

VESIcare is associated with antimuscarinic central nervous system (CNS) adverse reactions [see [Adverse Reactions \(6.2\)](#)]. A variety of CNS antimuscarinic adverse reactions have been reported, including headache, confusion, hallucinations, and somnolence. Monitor patients for signs of antimuscarinic CNS adverse reactions, particularly after beginning treatment or increasing the dose. Advise patients not to drive or operate heavy machinery until they know how VESIcare affects them. If a patient experiences antimuscarinic CNS adverse reactions, consider dose reduction or drug discontinuation.

## 5.5 Controlled Narrow-Angle Glaucoma

VESIcare should be used with caution in patients being treated for narrow-angle glaucoma [see [Contraindications \(4\)](#)].

## 5.6 QT Prolongation in Patients at High Risk of QT Prolongation

In a study of the effect of solifenacin succinate on the QT interval conducted in 76 healthy women [see [Clinical Pharmacology \(12.2\)](#)], solifenacin succinate 30 mg (three times the largest maximum recommended dose in adult patients) was associated with a mean increase in the Fridericia-corrected QT interval of 8 msec (90% CI, 4, 13). The QT prolonging effect appeared less with solifenacin succinate 10 mg than with solifenacin succinate 30 mg, and the effect of solifenacin succinate 30 mg did not appear as large as that of the positive control moxifloxacin at its therapeutic dose.

The use of VESIcare is not recommended in patients at high risk of QT prolongation, including patients with a known history of QT prolongation and patients who are taking medications known to prolong the QT interval.

# 6 ADVERSE REACTIONS

## 6.1 Clinical Trials Experience

Because clinical trials are conducted under widely varying conditions, adverse reaction rates observed in the clinical trials of a drug cannot be directly compared to rates in the clinical trials of another drug and may not reflect the rates observed in practice.

VESIcare has been evaluated for safety in 1811 adult patients in four randomized, placebo-controlled trials (Studies 1-4) [see [Clinical Studies \(14\)](#)]. Expected adverse reactions of antimuscarinic agents are dry mouth, constipation, blurred vision (accommodation abnormalities), urinary retention, and dry eyes. The incidence of dry mouth and constipation in patients treated with VESIcare was higher in the 10 mg dose group compared to the 5 mg dose group.

In the four 12-week double-blind clinical trials, severe fecal impaction, colonic obstruction, and intestinal obstruction were reported in one patient each, all in the VESIcare 10 mg group. Angioneurotic edema was reported in one patient taking VESIcare 5 mg. Compared to 12 weeks of treatment with VESIcare, the incidence and severity of adverse reactions were similar in patients who remained on drug for up to 12 months in Study 5 [see [Clinical Studies \(14\)](#)].

The most frequent adverse reaction leading to study discontinuation was dry mouth (1.5%). [Table 1](#) lists the rates of identified adverse reactions, in the four randomized, placebo-controlled trials at an incidence greater than placebo and in 1% or more of patients treated with VESicare 5 or 10 mg once daily for up to 12 weeks.

**Table 1: Adverse Reactions Reported by ≥ 1% of Patients and Exceeding Placebo in Studies 1, 2, 3 and 4**

	Placebo (%)	VESicare 5 mg (%)	VESicare 10 mg (%)
<b>Number of Patients</b>	<b>1216</b>	<b>578</b>	<b>1233</b>
<b>GASTROINTESTINAL DISORDERS</b>			
Dry Mouth	4.2	10.9	27.6
Constipation	2.9	5.4	13.4
Nausea	2.0	1.7	3.3
Dyspepsia	1.0	1.4	3.9
Abdominal Pain Upper	1.0	1.9	1.2
Vomiting NOS	0.9	0.2	1.1
<b>INFECTIONS AND INFESTATIONS</b>			
Urinary Tract Infection NOS	2.8	2.8	4.8
Influenza	1.3	2.2	0.9
Pharyngitis NOS	1.0	0.3	1.1
<b>NERVOUS SYSTEM DISORDERS</b>			
Dizziness	1.8	1.9	1.8
<b>EYE DISORDERS</b>			
Vision Blurred	1.8	3.8	4.8
Dry Eyes NOS	0.6	0.3	1.6
<b>RENAL AND URINARY DISORDERS</b>			
Urinary Retention	0.6	0	1.4
<b>GENERAL DISORDERS AND ADMINISTRATION SITE CONDITIONS</b>			
Edema Lower Limb	0.7	0.3	1.1
Fatigue	1.1	1.0	2.1
<b>PSYCHIATRIC DISORDERS</b>			
Depression NOS	0.8	1.2	0.8
<b>RESPIRATORY, THORACIC AND MEDIASTINAL DISORDERS</b>			
Cough	0.2	0.2	1.1
<b>VASCULAR DISORDERS</b>			
Hypertension NOS	0.6	1.4	0.5

## 6.2 Postmarketing Experience

The following adverse reactions have been identified during post-approval use of solifenacin succinate in the U.S. and/or outside of the U.S. Because these reactions are reported voluntarily from a population of uncertain size, it is not always possible to reliably estimate their frequency or establish a causal relationship to drug exposure.

General disorders and administration site conditions: peripheral edema, hypersensitivity reactions (including angioedema with airway obstruction, rash, pruritus, urticaria, anaphylactic reaction);

Nervous system disorders: dizziness, headache, confusion, hallucinations, delirium, somnolence;

Cardiac disorders: QT prolongation, Torsade de Pointes, atrial fibrillation, tachycardia, palpitations;

Hepatobiliary disorders: liver disorders mostly characterized by abnormal liver function tests, AST (aspartate aminotransferase), ALT (alanine aminotransferase), GGT (gamma-glutamyl transferase);

Renal and urinary disorders: renal impairment, urinary retention;

Metabolism and nutrition disorders: decreased appetite, hyperkalemia;

Skin and subcutaneous tissue disorders: exfoliative dermatitis, erythema multiforme, dry skin;

Eye disorders: glaucoma;

Gastrointestinal disorders: gastroesophageal reflux disease, ileus, vomiting, abdominal pain, dysgeusia, sialadenitis;

Respiratory, thoracic and mediastinal disorders: dysphonia, nasal dryness;

Musculoskeletal and connective tissue disorders: muscular weakness.

## 7 DRUG INTERACTIONS

### 7.1 Strong CYP3A4 Inhibitors

Solifenacin is a substrate of CYP3A4. Concomitant use of ketoconazole, a strong CYP3A4 inhibitor, significantly increased the exposure of solifenacin [see [Clinical Pharmacology \(12.3\)](#)]. The dosage of VESIcare greater than 5 mg once daily is not recommended when concomitantly used with strong CYP3A4 inhibitors [see [Dosage and Administration \(2.4\)](#)].

## 8 USE IN SPECIFIC POPULATIONS

### 8.1 Pregnancy

#### Risk Summary

There are no studies with the use of solifenacin succinate in pregnant women to inform a drug-associated risk of major birth defects, miscarriages, or adverse maternal or fetal outcomes. No adverse developmental outcomes were observed in animal reproduction studies with oral administration of solifenacin succinate to pregnant mice during the period of organogenesis at a dose resulting in 1.2 times the systemic exposure at the maximum recommended human dose (MRHD) of 10 mg/day. However, administration of doses 3.6 times and greater than the MRHD during organogenesis produced maternal toxicity in the pregnant mice and resulted in developmental toxicity and reduced fetal body weights in offspring [see [Data](#)].

In the U.S. general population, the estimated background risk of major birth defects or miscarriage in clinically recognized pregnancies is 2-4% and 15-20%, respectively.

#### Data

##### *Animal Data*

Oral administration of <sup>14</sup>C-solifenacin succinate to pregnant mice resulted in the recovery of radiolabel in the fetus indicating that solifenacin-related product can cross the placental barrier. In pregnant mice, administration of solifenacin succinate at a dose of 250 mg/kg/day (7.9 times the systemic exposure at the MRHD of 10 mg), resulted in an increased incidence of cleft palate and increased maternal lethality. Administration of solifenacin succinate to pregnant mice during organogenesis at greater than or equal to 3.6 times (100 mg/kg/day and greater) the systemic exposure at the MRHD, resulted in reduced fetal body weights and reduced maternal body weight gain. No embryo-fetal toxicity or teratogenicity was observed in fetuses from pregnant mice treated with solifenacin succinate at a dose of 30 mg/kg/day (1.2 times the systemic exposure at the MRHD). Administration of solifenacin succinate to pregnant rats and rabbits at a dose of 50 mg/kg/day (< 1 times and 1.8 times the systemic exposure at the MRHD, respectively), resulted in no findings of embryo-fetal toxicity. Oral pre- and post-natal administration of solifenacin succinate at 100 mg/kg/day (3.6 times the

systemic exposure at the MRHD) during the period of organogenesis through weaning, resulted in reduced peripartum and postnatal survival, reduced body weight gain by the pups, and delayed physical development (eye opening and vaginal patency). An increase in the percentage of male offspring was also observed in litters from offspring (F2 generation) exposed to maternal doses of 250 mg/kg/day. There were no effects on natural delivery in mice treated with 1.2 times (30 mg/kg/day) the expected systemic exposure at the MRHD.

## 8.2 Lactation

### Risk Summary

There is no information on the presence of solifenacin in human milk, the effects on the breastfed child, or the effects on milk production. Solifenacin is present in mouse milk [see [Data](#)]. When a drug is present in animal milk, it is likely that the drug will be present in human milk. The developmental and health benefits of breastfeeding should be considered along with the mother's clinical need for VESIcare and any potential adverse effects on the breastfed child from VESIcare or from the underlying maternal condition.

### Data

#### *Animal Data*

Oral administration of  $^{14}\text{C}$ -solifenacin succinate to lactating mice resulted in the recovery of radioactivity in maternal milk. Lactating female mice orally administered solifenacin succinate at a maternally toxic dose of 100 mg/kg/day (3.6 times the systemic exposure at the MRHD) had increased postpartum pup mortality, pups with reduced body weights, or delays in the onset of reflex and physical development. Pups from lactating dams orally administered solifenacin succinate at a dose of 30 mg/kg/day (1.2 times the systemic exposure at the MRHD) had no discernible adverse findings. The concentrations of solifenacin in animal milk does not necessarily predict the concentration of drug in human milk.

## 8.4 Pediatric Use

The safety and effectiveness of VESIcare Tablets have not been established in pediatric patients.

## 8.5 Geriatric Use

In placebo-controlled clinical studies, similar safety and effectiveness were observed between geriatric patients (623 patients  $\geq 65$  years and 189 patients  $\geq 75$  years) and younger adult patients (1188 patients  $< 65$  years) treated with VESIcare [see [Clinical Pharmacology](#) (12.3)].

## 8.6 Renal Impairment

Solifenacin plasma concentrations are greater in patients with severe renal impairment compared to subjects with normal renal function [see [Clinical Pharmacology](#) (12.3)]. Because increased solifenacin plasma concentrations increase the risk of antimuscarinic adverse reactions, the maximum recommended dose of VESIcare in patients with severe renal impairment ( $\text{CL}_{\text{cr}} < 30 \text{ mL/min/1.73 m}^2$ ) is 5 mg once daily [see [Dosage and Administration](#) (2.2)]. The recommended dose in patients with mild or moderate renal impairment is the same as in patients with normal renal function.

## 8.7 Hepatic Impairment

Solifenacin plasma concentrations are greater in patients with moderate hepatic impairment compared to subjects with normal hepatic function [see [Clinical Pharmacology](#) (12.3)]. Because increased solifenacin plasma concentrations increase the risk of antimuscarinic adverse reactions, the maximum recommended dose of VESIcare in patients with moderate hepatic impairment (Child-Pugh B) is 5 mg once daily [see [Dosage and Administration](#) (2.3)] and VESIcare is not recommended for use in patients with severe hepatic impairment (Child-Pugh C).

## 8.8 Gender

The pharmacokinetics of solifenacin is not significantly influenced by gender.

## 10 OVERDOSAGE

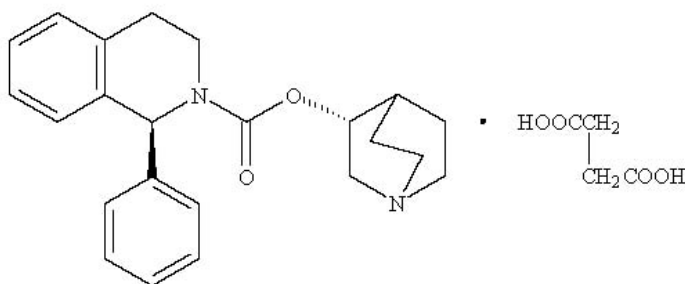
Overdosage with VESIcare can potentially result in severe antimuscarinic effects and should be treated accordingly. The highest dose ingested in an accidental overdose of solifenacin succinate was 280 mg (28 times the maximum dosage) in a 5-hour period. This case was associated with mental status changes. Some cases reported a decrease in the level of consciousness.

Intolerable antimuscarinic adverse reactions (fixed and dilated pupils, blurred vision, failure of heel-to-toe exam, tremors, and dry skin) occurred on day 3 in normal volunteers taking 50 mg daily (5 times the maximum recommended therapeutic dose) and resolved within 7 days following discontinuation of drug.

In the event of overdose with VESIcare, treat with gastric lavage and appropriate supportive measures. ECG monitoring is also recommended.

## 11 DESCRIPTION

VESIcare (solifenacin succinate) is a muscarinic receptor antagonist. Chemically, solifenacin succinate is a butanedioic acid compound with (1*S*)-(3*R*)-1-azabicyclo[2.2.2]oct-3-yl 3,4-dihydro-1-phenyl-2(1*H*)-iso-quinolinecarboxylate (1:1) having an empirical formula of  $C_{23}H_{26}N_2O_2 \cdot C_4H_6O_4$ , and a molecular weight of 480.55. The structural formula of solifenacin succinate is:



Solifenacin succinate is a white to pale-yellowish-white crystal or crystalline powder. It is freely soluble at room temperature in water, glacial acetic acid, dimethyl sulfoxide, and methanol.

Each VESIcare tablet contains 5 or 10 mg of solifenacin succinate and is for oral administration. In addition to the active ingredient solifenacin succinate, each VESIcare tablet also contains the following inactive ingredients: lactose monohydrate, corn starch, hypromellose 2910, magnesium stearate, talc, polyethylene glycol 8000 and titanium dioxide with yellow ferric oxide (5 mg VESIcare tablet) or red ferric oxide (10 mg VESIcare tablet).

## 12 CLINICAL PHARMACOLOGY

### 12.1 Mechanism of Action

Solifenacin is a competitive muscarinic receptor antagonist. Muscarinic receptors play an important role in several major cholinergically mediated functions, including contractions of urinary bladder smooth muscle.



## 12.2 Pharmacodynamics

### Cardiac Electrophysiology

The effect of 10 mg and 30 mg solifenacin succinate (three times the maximum recommended dose) on the QT interval was evaluated at the time of peak plasma concentration of solifenacin in a multi-dose, randomized, double-blind, placebo and positive-controlled (moxifloxacin 400 mg) trial [see [Warnings and Precautions \(5.6\)](#)]. After receiving placebo and moxifloxacin sequentially, subjects were randomized to one of two treatment groups. One group (n=51) completed 3 additional sequential periods of dosing with solifenacin succinate 10, 20, and 30 mg while the second group (n=25) in parallel completed a sequence of placebo and moxifloxacin. Study subjects were female volunteers aged 19 to 79 years. The 30 mg dose of solifenacin succinate (three times the highest recommended dose) was chosen for use in this study because this dose results in a solifenacin exposure that covers those observed upon coadministration of 10 mg VESIcare with strong CYP3A4 inhibitors (e.g., ketoconazole, 400 mg). Due to the sequential dose escalating nature of the study, baseline ECG measurements were separated from the final QT assessment (of the 30 mg dose level) by 33 days.

The median difference from baseline in heart rate associated with the 10 and 30 mg doses of solifenacin succinate compared to placebo was -2 and 0 beats/minute, respectively. Because a significant period effect on QTc was observed, the QTc effects were analyzed utilizing the parallel placebo control arm rather than the pre-specified intra-patient analysis. Representative results are shown in [Table 2](#).

**Table 2: QTc changes in msec (90% CI) from baseline at T<sub>max</sub> (relative to placebo)<sup>1</sup>**

Drug/Dose	Fridericia method (using mean difference)
Solifenacin succinate 10 mg	2 (-3, 6)
Solifenacin succinate 30 mg	8 (4, 13)

1. Results displayed are those derived from the parallel design portion of the study and represent the comparison of Group 1 to time-matched placebo effects in Group 2.

Moxifloxacin was included as a positive control in this study and, given the length of the study, its effect on the QT interval was evaluated in 3 different sessions. The placebo-subtracted mean changes (90% CI) in QTcF for moxifloxacin in the three sessions were 11 (7, 14), 12 (8, 17), and 16 (12, 21), respectively.

The QT interval prolonging effect of the highest solifenacin succinate dose (three times the maximum therapeutic dose) studied was not as large as that of the positive control moxifloxacin at its recommended dose. However, the confidence intervals overlapped, and this study was not designed to draw direct statistical conclusions between the drugs or the dose levels.

## 12.3 Pharmacokinetics

### Absorption

After oral administration of VESIcare in healthy volunteers, peak plasma concentrations (C<sub>max</sub>) of solifenacin were reached within 3 to 8 hours after administration and, at steady-state, ranged from 32.3 to 62.9 ng/mL for the 5 and 10 mg VESIcare tablets, respectively. The absolute bioavailability of solifenacin is approximately 90%, with plasma concentrations of solifenacin proportional to the dose administered.

#### *Effect of Food*

VESIcare may be administered without regard to meals. A single 10 mg dose administration of VESIcare with food increased C<sub>max</sub> and AUC of solifenacin by 4% and 3%, respectively.

### Distribution

Solifenacin is approximately 98% (*in vivo*) bound to human plasma proteins, principally to  $\alpha_1$ -acid glycoprotein. Solifenacin is highly distributed to non-CNS tissues, having a mean steady-state volume of distribution of 600 L.



## Elimination

The elimination half-life ( $t_{1/2}$ ) of solifenacin following chronic dosing is approximately 45-68 hours.

### *Metabolism*

Solifenacin is extensively metabolized in the liver. The primary pathway for elimination is by way of CYP3A4; however, alternate metabolic pathways exist. The primary metabolic routes of solifenacin are through N-oxidation of the quinuclidin ring and 4R-hydroxylation of the tetrahydroisoquinoline ring. One pharmacologically active metabolite (4R-hydroxy solifenacin), occurring at low concentrations and unlikely to contribute significantly to clinical activity, and three pharmacologically inactive metabolites (N-glucuronide and the N-oxide and 4R-hydroxy-N-oxide of solifenacin) have been found in human plasma after oral dosing.

### *Excretion*

Following the administration of 10 mg of  $^{14}\text{C}$ -solifenacin succinate to healthy volunteers, 69% of the radioactivity was recovered in the urine and 23% in the feces over 26 days. Less than 15% (as mean value) of the dose was recovered in the urine as intact solifenacin. The major metabolites identified in urine were N-oxide of solifenacin, 4R-hydroxy solifenacin, and 4R-hydroxy-N-oxide of solifenacin and, in feces, 4R-hydroxy solifenacin.

## Specific Populations

### *Geriatric Patients*

Multiple dose studies of VESIcare in geriatric volunteers (65 to 80 years) showed that  $C_{\max}$ , AUC and  $t_{1/2}$  values of solifenacin were 20-25% higher compared to the younger adult volunteers (18 to 55 years). [See [Use in Specific Populations \(8.5\)](#)].

### *Patients with Renal Impairment*

In studies with solifenacin succinate 10 mg, there was a 2.1-fold increase in AUC and a 1.6-fold increase in  $t_{1/2}$  of solifenacin in patients with severe renal impairment compared to subjects with normal renal function [see [Use in Specific Populations \(8.6\)](#)].

### *Patients with Hepatic Impairment*

In studies with solifenacin succinate 10 mg, there was a 2-fold increase in the  $t_{1/2}$  and a 35% increase in AUC of solifenacin in patients with moderate hepatic impairment compared to subjects with normal hepatic function [see [Use in Specific Populations \(8.7\)](#)]. VESIcare has not been studied in patients with severe hepatic impairment.

## Drug Interaction Studies

### *Strong CYP3A4 Inhibitors*

In a crossover study, following blockade of CYP3A4 by coadministration of the strong CYP3A4 inhibitor, ketoconazole 400 mg once daily for 21 days, the mean  $C_{\max}$  and AUC of solifenacin increased by 1.5 and 2.7-fold, respectively [see [Dosage and Administration \(2.4\)](#) and [Drug Interactions \(7.1\)](#)].

### *CYP3A4 Inducers*

Because solifenacin is a substrate of CYP3A4, inducers of CYP3A4 may decrease the concentration of solifenacin.

### *Warfarin*

In a crossover study, subjects received a single oral dose of warfarin 25 mg on the 10<sup>th</sup> day of dosing with either solifenacin succinate 10 mg or matching placebo once daily for 16 days. For *R*-warfarin, when it was coadministered with solifenacin succinate, the mean  $C_{\max}$  increased by 3% and AUC decreased by 2%. For *S*-warfarin, when it was coadministered with solifenacin succinate, the mean  $C_{\max}$  and AUC increased by 5% and 1%, respectively.

#### *Oral Contraceptives*

In a crossover study, subjects received 2 cycles of 21 days of oral contraceptives containing 30 ug ethinyl estradiol and 150 ug levonorgestrel. During the second cycle, subjects received additional solifenacin succinate 10 mg or matching placebo once daily for 10 days starting from the 12<sup>th</sup> day of receipt of oral contraceptives. For ethinyl estradiol, when it was administered with solifenacin succinate, the mean C<sub>max</sub> and AUC increased by 2% and 3%, respectively. For levonorgestrel, when it was administered with solifenacin succinate, the mean C<sub>max</sub> and AUC decreased by 1%.

#### *Digoxin*

In a crossover study, subjects received digoxin (loading dose of 0.25 mg on day 1, followed by 0.125 mg from days 2 to 8) for 8 days. Consecutively, they received solifenacin succinate 10 mg or matching placebo with digoxin 0.125 mg for an additional 10 days. When digoxin was coadministered with solifenacin succinate, the mean C<sub>max</sub> and AUC increased by 13% and 4%, respectively.

#### *Drugs Metabolized by Cytochrome P450 Enzymes*

*In vitro* studies demonstrated that, at therapeutic concentrations, solifenacin does not inhibit CYP1A1/2, 2C9, 2C19, 2D6, or 3A4 derived from human liver microsomes.

## **13 NONCLINICAL TOXICOLOGY**

### **13.1 Carcinogenesis, Mutagenesis, Impairment of Fertility**

No increase in tumors was found following the administration of solifenacin succinate to male and female mice for 104 weeks at doses up to 200 mg/kg/day (5 and 9 times, respectively, of the exposure at the maximum recommended human dose [MRHD] of 10 mg), and male and female rats for 104 weeks at doses up to 20 and 15 mg/kg/day, respectively (< 1 times the exposure at the MRHD).

Solifenacin succinate was not mutagenic in the *in vitro* *Salmonella typhimurium* or *Escherichia coli* microbial mutagenicity test or chromosomal aberration test in human peripheral blood lymphocytes with or without metabolic activation or in the *in vivo* micronucleus test in rats.

Solifenacin succinate had no effect on reproductive function, fertility, or early embryonic development of the fetus in male and female mice treated with 250 mg/kg/day (13 times the exposure at the MRHD) of solifenacin succinate, and in male rats treated with 50 mg/kg/day (< 1 times the exposure at the MRHD) and female rats treated with 100 mg/kg/day (1.7 times the exposure at the MRHD) of solifenacin succinate.

### **13.2 Animal Toxicology and/or Pharmacology**

#### Juvenile Animal Toxicology Data

Dose-related increased mortality without preceding clinical signs occurred in juvenile mice treated before weaning for a duration of 12 weeks, from day 10 after birth, with doses that achieved a pharmacological effect. Animals dosed from postnatal day 10 onwards had higher mortality compared to the mortality in adult mice. No increased frequency in mortality was observed in juvenile mice that were treated after weaning for a duration of 4 weeks, from day 21 after birth onwards. Plasma exposure at postnatal day 10 was higher than in adult mice; the systemic exposure at postnatal day 21 was comparable to the systemic exposure in adult mice.

## 14 CLINICAL STUDIES

VESIcare was evaluated in four twelve-week, double-blind, randomized, placebo-controlled, parallel group, multicenter clinical trials for the treatment of overactive bladder in adult patients having symptoms of urinary frequency, urgency, and/or urge or mixed incontinence (with a predominance of urge). Entry criteria required that patients have symptoms of overactive bladder for  $\geq 3$  months duration. These studies involved 3027 patients (1811 on VESIcare and 1216 on placebo), and approximately 90% of these patients completed the 12-week studies. Two of the four studies evaluated the 5 and 10 mg VESIcare doses (Studies 1 and 2) and the other two evaluated only the 10 mg dose (Studies 3 and 4). All patients completing the 12-week studies were eligible to enter an open-label, long-term extension study (Study 5) and 81% of patients enrolling completed the additional 40-week treatment period. The majority of patients were Caucasian (93%) and female (80%) with a mean age of 58 years.

The primary endpoint in all four trials was the mean change from baseline to 12 weeks in number of micturitions/24 hours. Secondary endpoints included mean change from baseline to 12 weeks in number of incontinence episodes/24 hours, and mean volume voided per micturition.

The efficacy of VESIcare was similar across patient age groups and gender. The mean reduction in the number of micturitions per 24 hours was significantly greater with VESIcare 5 mg (2.3;  $p < 0.001$ ) and VESIcare 10 mg (2.7;  $p < 0.001$ ) compared to placebo (1.4). The mean reduction in the number of incontinence episodes per 24 hours was significantly greater with VESIcare 5 mg (1.5;  $p < 0.001$ ) and VESIcare 10 mg (1.8;  $p < 0.001$ ) treatment groups compared to the placebo treatment group (1.1). The mean increase in the volume voided per micturition was significantly greater with VESIcare 5 mg (32.3 mL;  $p < 0.001$ ) and VESIcare 10 mg (42.5 mL;  $p < 0.001$ ) compared with placebo (8.5 mL).

The results for the primary and secondary endpoints in the four individual 12-week clinical studies of VESIcare are reported in Tables 3 through 6.

**Table 3: Mean Changes from Baseline to Week 12 in Efficacy Endpoints in Study 1**

Parameter	Placebo (N=253) Mean (SE)	VESIcare 5 mg (N=266) Mean (SE)	VESIcare 10 mg (N=264) Mean (SE)
Urinary Frequency (Number of Micturitions/24 hours) <sup>1</sup>			
Baseline	12.2 (0.26)	12.1 (0.24)	12.3 (0.24)
Reduction	1.2 (0.21)	2.2 (0.18)	2.6 (0.20)
P value vs. placebo		$< 0.001$	$< 0.001$
Number of Incontinence Episodes/24 hours <sup>2</sup>			
Baseline	2.7 (0.23)	2.6 (0.22)	2.6 (0.23)
Reduction	0.8 (0.18)	1.4 (0.15)	1.5 (0.18)
P value vs. placebo		$< 0.01$	$< 0.01$
Volume Voided per Micturition [mL] <sup>2</sup>			
Baseline	143.8 (3.37)	149.6 (3.35)	147.2 (3.15)
Increase	7.4 (2.28)	32.9 (2.92)	39.2 (3.11)
P value vs. placebo		$< 0.001$	$< 0.001$

1. Primary endpoint
2. Secondary endpoint

**Table 4: Mean Changes from Baseline to Week 12 in Efficacy Endpoints in Study 2**

<b>Parameter</b>	<b>Placebo (N=281) Mean (SE)</b>	<b>VESIcare 5 mg (N=286) Mean (SE)</b>	<b>VESIcare 10 mg (N=290) Mean (SE)</b>
Urinary Frequency (Number of Micturations/24 hours) <sup>1</sup>			
Baseline	12.3 (0.23)	12.1 (0.23)	12.1 (0.21)
Reduction	1.7 (0.19)	2.4 (0.17)	2.9 (0.18)
P value vs. placebo		< 0.001	< 0.001
Number of Incontinence Episodes/24 hours <sup>2</sup>			
Baseline	3.2 (0.24)	2.6 (0.18)	2.8 (0.20)
Reduction	1.3 (0.19)	1.6 (0.16)	1.6 (0.18)
P value vs. placebo		< 0.01	0.016
Volume Voided per Micturition [mL] <sup>2</sup>			
Baseline	147.2 (3.18)	148.5 (3.16)	145.9 (3.42)
Increase	11.3 (2.52)	31.8 (2.94)	36.6 (3.04)
P value vs. placebo		< 0.001	< 0.001

1. Primary endpoint

2. Secondary endpoint

**Table 5: Mean Changes from Baseline to Week 12 in Efficacy Endpoints in Study 3**

<b>Parameter</b>	<b>Placebo (N=309) Mean (SE)</b>	<b>VESIcare 10 mg (N=306) Mean (SE)</b>
Urinary Frequency (Number of Micturations/24 hours) <sup>1</sup>		
Baseline	11.5 (0.18)	11.7 (0.18)
Reduction	1.5 (0.15)	3.0 (0.15)
P value vs. placebo		< 0.001
Number of Incontinence Episodes/24 hours <sup>2</sup>		
Baseline	3.0 (0.20)	3.1 (0.22)
Reduction	1.1 (0.16)	2.0 (0.19)
P value vs. placebo		< 0.001
Volume Voided per Micturition [mL] <sup>2</sup>		
Baseline	190.3 (5.48)	183.5 (4.97)
Increase	2.7 (3.15)	47.2 (3.79)
P value vs. placebo		< 0.001

1. Primary endpoint

2. Secondary endpoint

**Table 6: Mean Changes from Baseline to Week 12 in Efficacy Endpoints in Study 4**

Parameter	Placebo (N=295) Mean (SE)	VESIcare 10 mg (N=298) Mean (SE)
Urinary Frequency (Number of Micturations/24 hours) <sup>1</sup>		
Baseline	11.8 (0.18)	11.5 (0.18)
Reduction	1.3 (0.16)	2.4 (0.15)
P value vs. placebo		< 0.001
Number of Incontinence Episodes/24 hours <sup>2</sup>		
Baseline	2.9 (0.18)	2.9 (0.17)
Reduction	1.2 (0.15)	2.0 (0.15)
P value vs. placebo		< 0.001
Volume Voided per Micturition [mL] <sup>2</sup>		
Baseline	175.7 (4.44)	174.1 (4.15)
Increase	13.0 (3.45)	46.4 (3.73)
P value vs. placebo		< 0.001

1. Primary endpoint
2. Secondary endpoint

## 16 HOW SUPPLIED/STORAGE AND HANDLING

VESIcare is supplied as round, film-coated tablets, available in bottles as follows:

Each 5 mg tablet is light yellow and debossed with a logo and “150” and is available as follows:

Bottle of 30                                      NDC 51248-150-01

Each 10 mg tablet is light pink and debossed with a logo and “151” and is available as follows:

Bottle of 30                                      NDC 51248-151-01

Bottle of 90                                      NDC 51248-151-03

Store at 25°C (77°F) with excursions permitted from 15°C to 30°C (59°F to 86°F) [see USP Controlled Room Temperature].

## 17 PATIENT COUNSELING INFORMATION

Advise the patient to read the FDA-approved patient labeling (Patient Information).

### Angioedema and Anaphylactic Reactions

Inform patients that angioedema and anaphylactic reactions have been reported in patients treated with VESIcare. Angioedema and anaphylactic reactions may be life-threatening. Advise patients to promptly discontinue VESIcare therapy and seek immediate attention if they experience edema of the tongue or laryngopharynx, or difficulty breathing [see [Contraindications](#) (4) and [Warnings and Precautions](#) (5.1)].

### Urinary Retention

Inform patients that VESIcare may cause urinary retention in patients with conditions associated with bladder outlet obstruction [see [Warnings and Precautions](#) (5.2)].

## Gastrointestinal Disorders

Inform patients that VESIcare may cause further decrease in gastrointestinal motility in patients with conditions associated with decreased gastrointestinal motility. VESIcare has been associated with constipation and dry mouth. Advise patients to contact their health care providers if they experience severe abdominal pain or become constipated for 3 or more days [see [Warnings and Precautions \(5.3\)](#)].

## Central Nervous System Effects

Because VESIcare, like other antimuscarinic agents, may cause central nervous system effects or blurred vision, advise patients to exercise caution in decisions to engage in potentially dangerous activities until the drug's effect on the patient has been determined [see [Warnings and Precautions \(5.4\)](#)].

## Narrow-Angle Glaucoma

Inform patients that VESIcare, like other antimuscarinics, may cause worsening of the glaucoma condition in patients with narrow-angle glaucoma [see [Warnings and Precautions \(5.5\)](#)].

## Dry Skin

Inform patients that VESIcare, like other antimuscarinics, may cause dry skin due to decreased sweating. Heat prostration due to decreased sweating can occur when VESIcare is used in a hot environment [see [Adverse Reactions \(6.2\)](#)].

Marketed and Distributed by:

**Astellas Pharma US, Inc.**

Northbrook, IL 60062

VESIcare is a registered trademark of Astellas Pharma Inc.

© 2004 – 2022 Astellas Pharma US, Inc.

361078-VES

**Patient Information**  
**VESIcare® (VES-ih-care)**  
**(solifenacin succinate)**  
**Tablet**

Read the Patient Information that comes with VESIcare® before you start taking it and each time you get a refill. There may be new information. This leaflet does not take the place of talking with your doctor about your medical condition or treatment.

**What is VESIcare?**

VESIcare is a prescription medicine for **adults** used to treat the following symptoms due to a condition called **overactive bladder**:

- Urge urinary incontinence: a strong need to urinate with leaking or wetting accidents
- Urgency: a strong need to urinate right away
- Frequency: urinating often

VESIcare 5 mg and 10 mg tablets are not approved for use in children.

**Who should not take VESIcare?**

**Do not** take VESIcare if you:

- are not able to empty your bladder (urinary retention)
- have delayed or slow emptying of your stomach (gastric retention)
- have an eye problem called “uncontrolled narrow-angle glaucoma”
- are allergic to solifenacin succinate or any of the ingredients in VESIcare. See the end of this leaflet for a complete list of ingredients.

**What should I tell my doctor before taking VESIcare?**

**Before you take VESIcare, tell your doctor if you:**

- have any stomach or intestinal problems or problems with constipation
- have trouble emptying your bladder or you have a weak urine stream
- have an eye problem called “narrow-angle glaucoma”
- have liver problems
- have kidney problems
- have a rare heart problem called “QT prolongation”
- are pregnant or plan to become pregnant. It is not known if VESIcare will harm your unborn baby. Talk to your doctor if you are pregnant or plan to become pregnant.
- are breastfeeding or plan to breastfeed. It is not known if VESIcare passes into your breast milk. You and your doctor should decide if you will take VESIcare or breastfeed.

**Tell your doctor about all the medicines you take**, including prescription and nonprescription medicines, vitamins, and herbal supplements. VESIcare may affect the way other medicines work, and other medicines may affect how VESIcare works.

**How should I take VESIcare?**

- Take VESIcare exactly as your doctor tells you to take it.
- You should take 1 VESIcare tablet 1 time a day.
- You should take VESIcare with water and swallow the tablet whole.
- You can take VESIcare with or without food.
- If you miss a dose of VESIcare, begin taking VESIcare again the next day. Do not take 2 doses of VESIcare the same day.
- If you take too much VESIcare, call your doctor or go to the nearest hospital emergency room right away.

**What should I avoid while taking VESIcare?**

VESIcare can cause blurred vision or drowsiness. Do not drive or operate heavy machinery until you know how VESIcare affects you.



**What are the possible side effects of VESIcare?**

VESIcare may cause serious side effects including:

- **Serious allergic reaction.** Stop taking VESIcare and get medical help right away if you have:
  - hives, skin rash or swelling
  - severe itching
  - swelling of your face, mouth or tongue
  - trouble breathing

The most common side effects of VESIcare include:

- dry mouth
- constipation. Call your doctor if you get severe stomach area (abdominal) pain or become constipated for 3 or more days.
- urinary tract infection
- blurred vision

Other side effects have been observed with anticholinergic drugs such as VESIcare and may include:

- dry skin due to decreased sweating. Heat exhaustion or heat stroke can happen due to decreased sweating when VESIcare is used in hot environments. Symptoms may include:
  - decreased sweating
  - dizziness
  - tiredness
  - nausea
  - increase in body temperature

Tell your doctor if you have any side effect that bothers you or that does not go away.

These are not all the possible side effects of VESIcare. For more information, ask your doctor or pharmacist.

**Call your doctor for medical advice about side effects. You may report side effects to the FDA at 1-800-FDA-1088.**

**How should I store VESIcare?**

- Store VESIcare between 59°F to 86°F (15°C to 30°C). Keep the bottle closed.
- Safely throw away medicine that is out of date or no longer needed.

**Keep VESIcare and all medicines out of the reach of children.**

**General information about the safe and effective use of VESIcare**

Medicines are sometimes prescribed for purposes other than those listed in Patient Information leaflets. Do not use VESIcare for a condition for which it was not prescribed. Do not give VESIcare to other people, even if they have the same symptoms you have. It may harm them.

This leaflet summarizes the most important information about VESIcare. If you would like more information, talk with your doctor. You can ask your doctor or pharmacist for information about VESIcare that is written for health professionals.

**What are the ingredients in VESIcare?**

**Active ingredient:** solifenacin succinate

**Inactive ingredients:** lactose monohydrate, corn starch, hypromellose 2910, magnesium stearate, talc, polyethylene glycol 8000 and titanium dioxide with yellow ferric oxide (5 mg VESIcare tablet) or red ferric oxide (10 mg VESIcare tablet)

**What is overactive bladder?**

Overactive bladder occurs when you cannot control your bladder contractions. When these muscle contractions happen too often or cannot be controlled you can get symptoms of overactive bladder, which are urinary frequency, urinary urgency, and urinary incontinence (leakage).

Marketed and Distributed by:

**Astellas Pharma US, Inc.**

Northbrook, Illinois 60062

VESIcare is a registered trademark of Astellas Pharma Inc.

© 2004 – 2022 Astellas Pharma US, Inc.

For more information, call 1-800-727-7003.

361078-VES

This Patient Information has been approved by the U.S. Food and Drug Administration.

Revised: 10/2022